

A topographic map of the Kalush region in Ukraine, showing various settlements and geographical features. The map is framed by a dark green rounded rectangle. Overlaid on the map is the text 'Lotland' in large, blue, bold, sans-serif font with a red outline. Below it, the text '«Voïnyliv»' is written in the same style, enclosed in double blue chevrons. The settlement of 'Voïnyliv' on the map is highlighted with a red rectangular box. Other visible settlements include Цалтова, Лука, Сівка-Воїньківська, Діброва, Довжка, Мошківці, Довгий Воїньків, Томашівці, Станькова, Кулічка, Дубовиця, Середня, Негівці, Паркоси, Зборя, Ковча, Гурка, Середня, Кадошівка, Крощівка, Мосишівка, Калущ, Студівка, Бабина, Заріччя, Зелений Яр, Середній Угринів, Угринів, and Грабівка.

Lotland

«Voïnyliv»

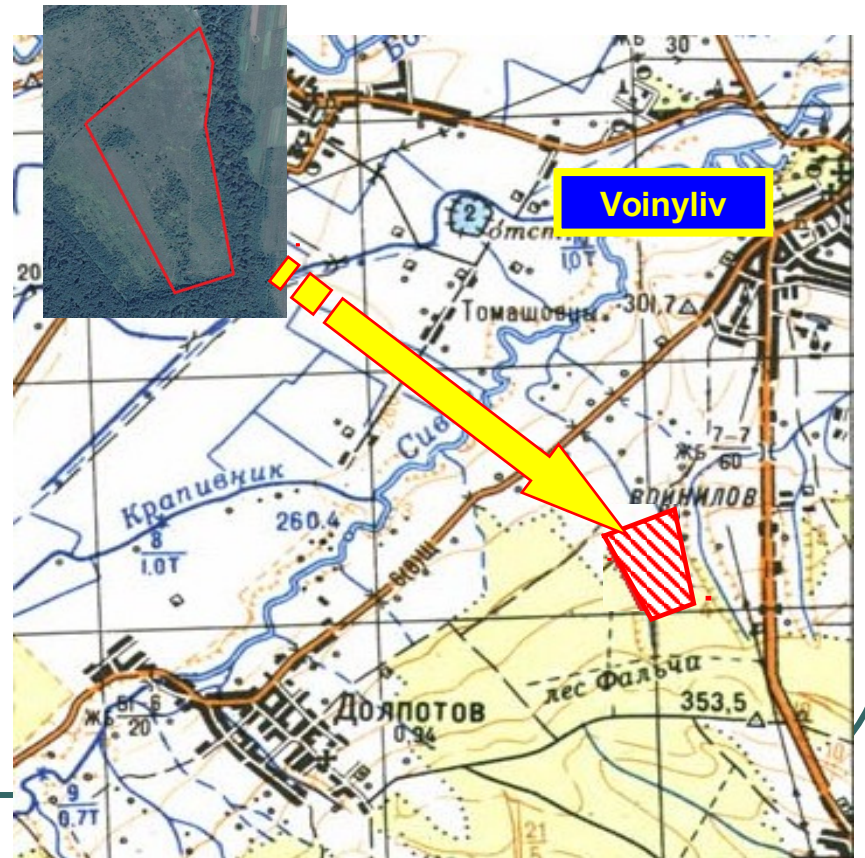
General information



- Land type Greenfield is located in the north-western townships Voinyliv.
- Land plot area - 4,58 ha.
- The distance to the village - 0,3 km.
- Distance to the nearest house - 1,0 km.
- Name of the nearest district center, distance – Kalush, 14.0 km
- Name of the nearest regional center, distance Ivano – Frankivsk, 40,0 km.
- geographic coordinates: 49°06'18.5"N
24°28'29.5"E



- Land trapezoid shape, flat terrain
- A mark above sea level - 311,0m
- The difference between the highest and lowest marks the site - 10,0m.
- Neighboring areas - land of private farms.
- At a distance of 2,5 km river runs Sivka

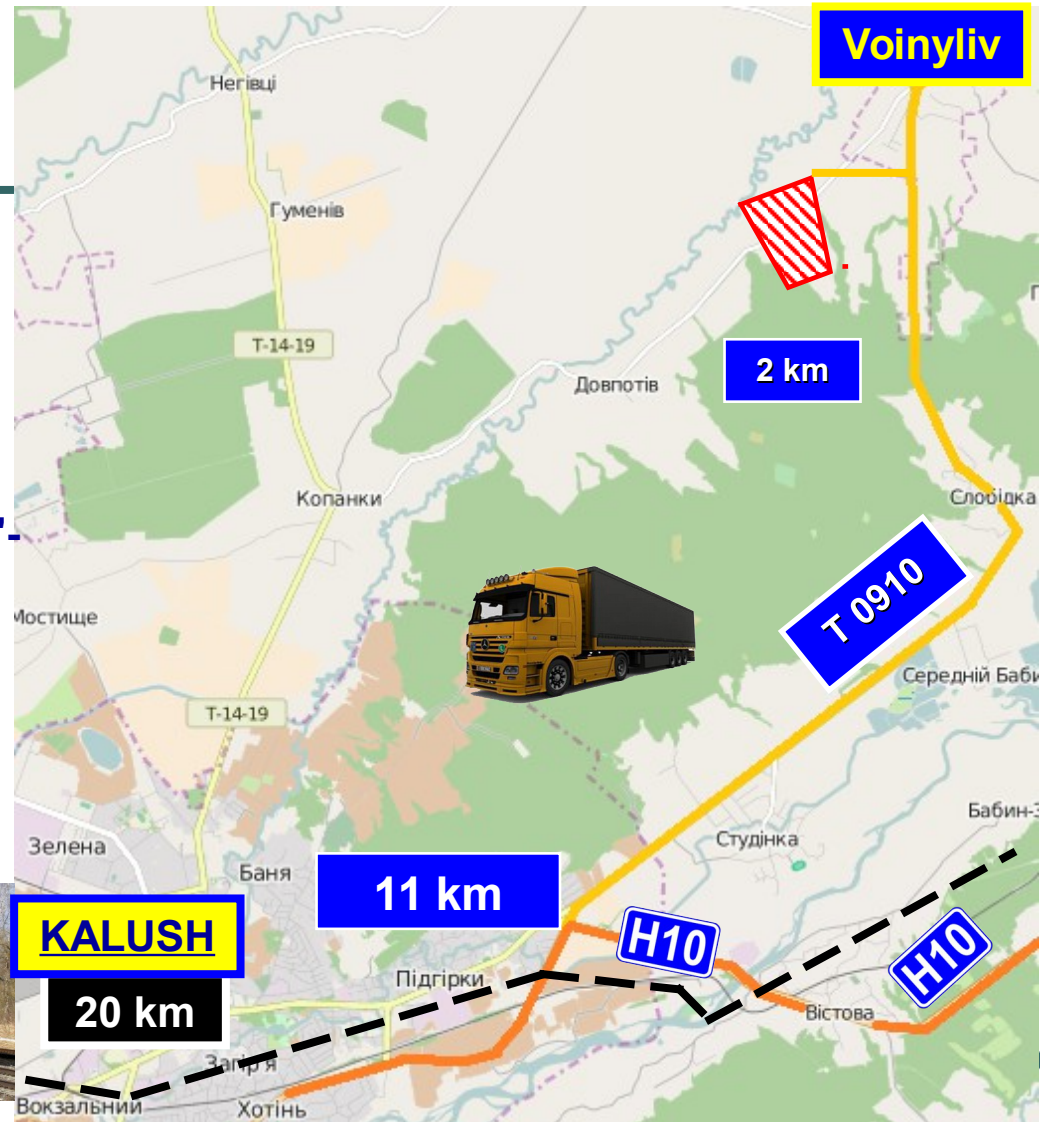


Legal status

- **Form of ownership - State**
- **The Department of State geological inventory in Ivano-Frankivsk region**
- **Cadastral number–2622855300:02:001:0149**
- **Designated purpose of the land plot - 01. agricultural land**
- **Master plan availability village – no**
- **Legal restrictions – no**
- **Land used for agricultural commodity production**
- **Form of transfer of land - long lease**
- **Approximate cost of land for rent – 2,5 UAH/sq.m**

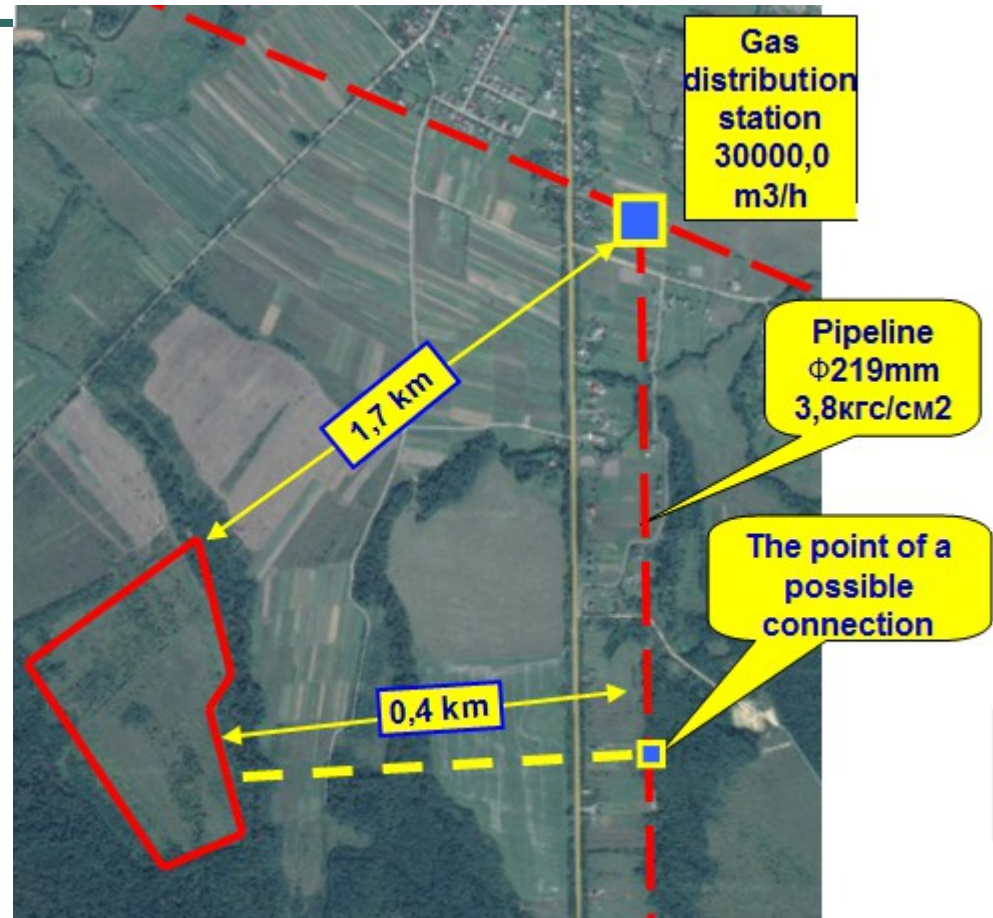
Transport and engineering infrastructure

- 6 m width ground road is available
- At a distance of 11 km road - H 10
- At a distance of 2 km road – T0910
- Distance to freight station "Kalush" - 20km.
- The distance to the international airport "Ivano-Frankivsk - 52 km

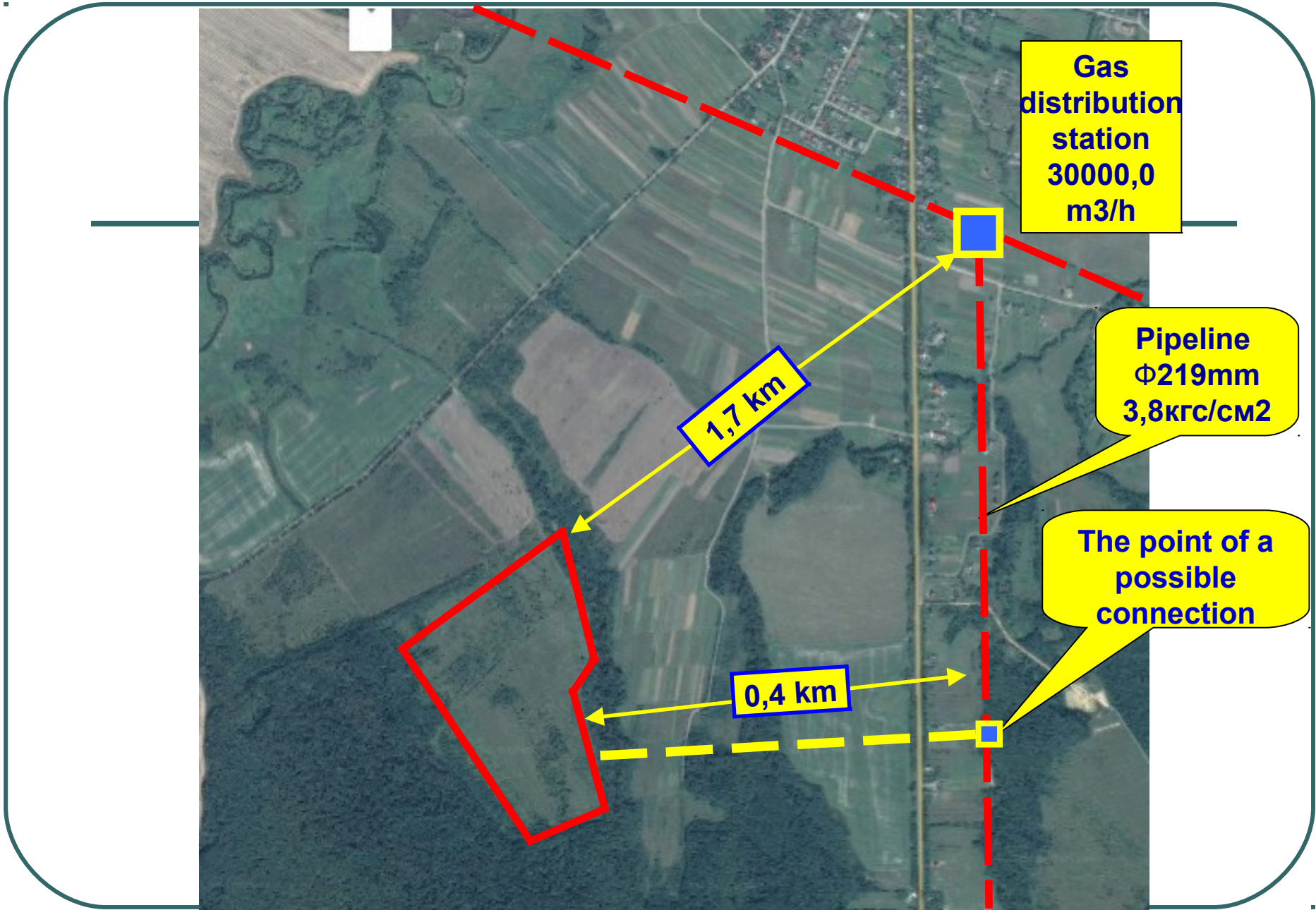


Information about gas supply

- Distance to the existing gas pipeline- 0.4 km
- Pipeline diameter – 219 mm
- Gas pressure in the pipeline - 3,8 gf/cm²
- Capacity margin of the possible connection to the pipeline - 5000,0 m³/h
- Distance to the existing gas distribution station - 0,95 km



- Capacity margin of the gas distribution station - 30000.0 m³/h



**Gas
distribution
station
30000,0
m3/h**

**Pipeline
Ø219mm
3,8кгс/см2**

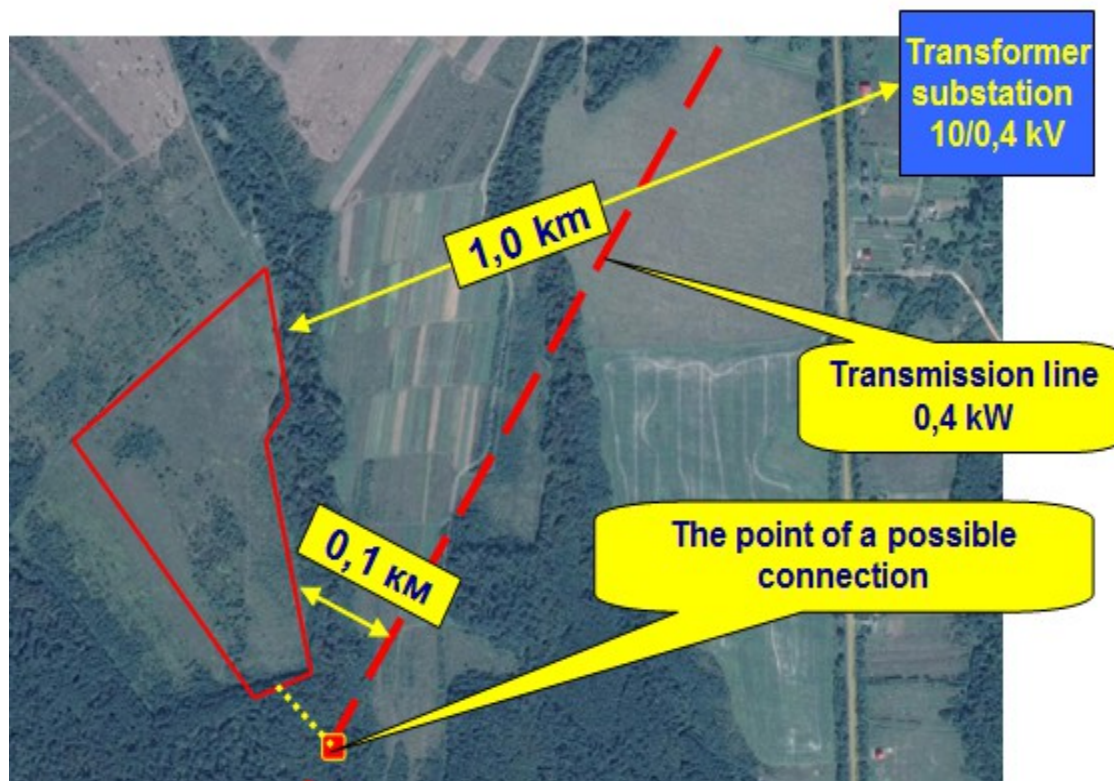
**The point of a
possible
connection**

1,7 km

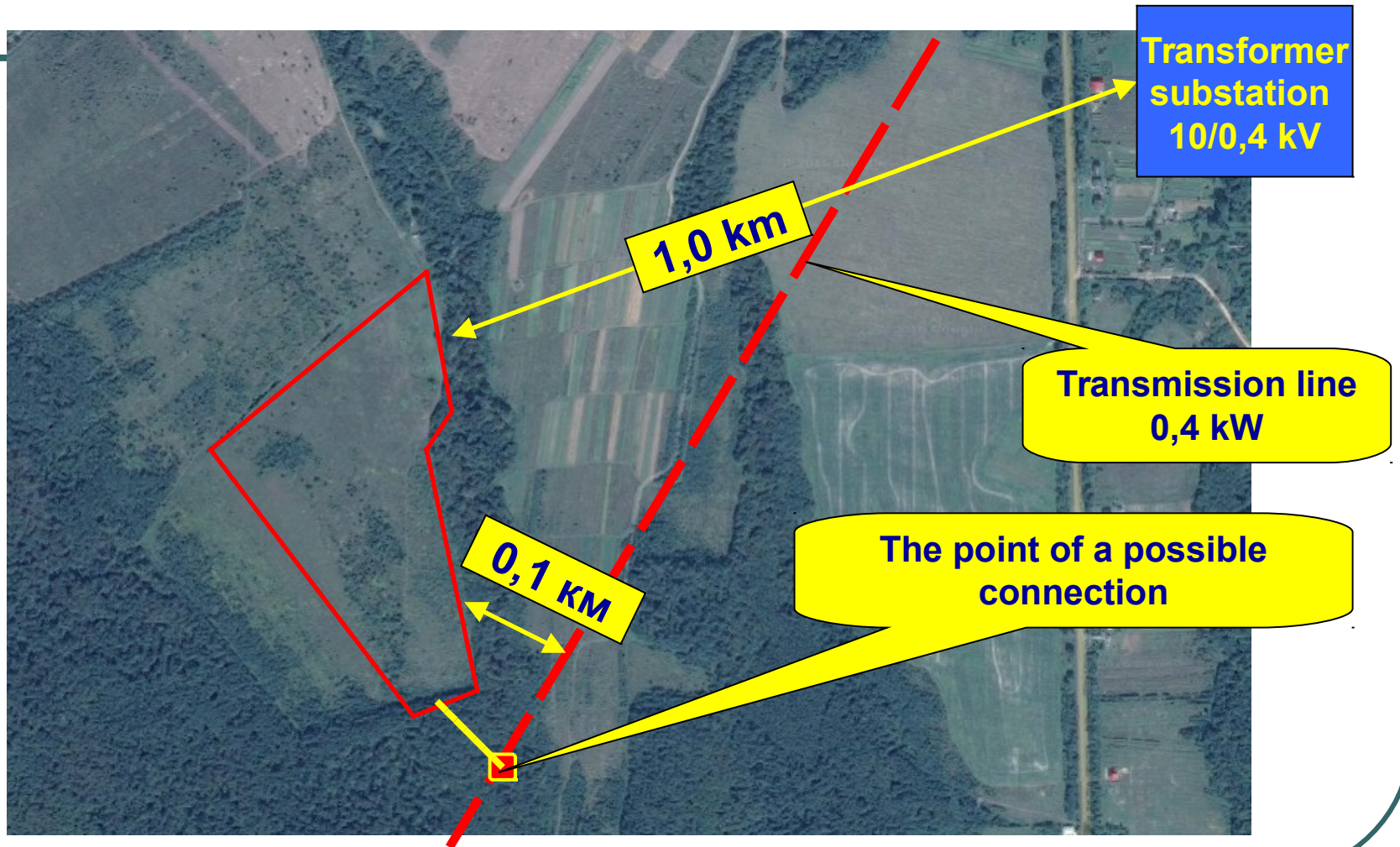
0,4 km

Transmission network

- Distance to the existing power transmission line – 0,1 km
- Power transmission line voltage – 10 kV.
- Capacity margin of the possible connection to the power transmission line – 600 kW.
- Distance to the existing transformer substation – 1,0 km
- Transformer substation voltage – 10/0,4 kV
- Capacity margin of the transformer substation – 60,78 kW



Transmission network



Information about water supply and about sewage discharge

- In the land of water supply and sanitation – no
- Provide land in water supply can be built the infrastructure





Contacts

ishment, ization	Kalush District Administration Shevchenko street, 6 Kalush Ivano-Frankivsk region. 77300 Ukraine
urname of contact n	Nataliia Yosypivna Babii
Phone	(03472) 6-03-01
Fax	(03472) 6-00-23
E-mail	kalushinvest@gmail.com
Website	www.rda.if.ua

